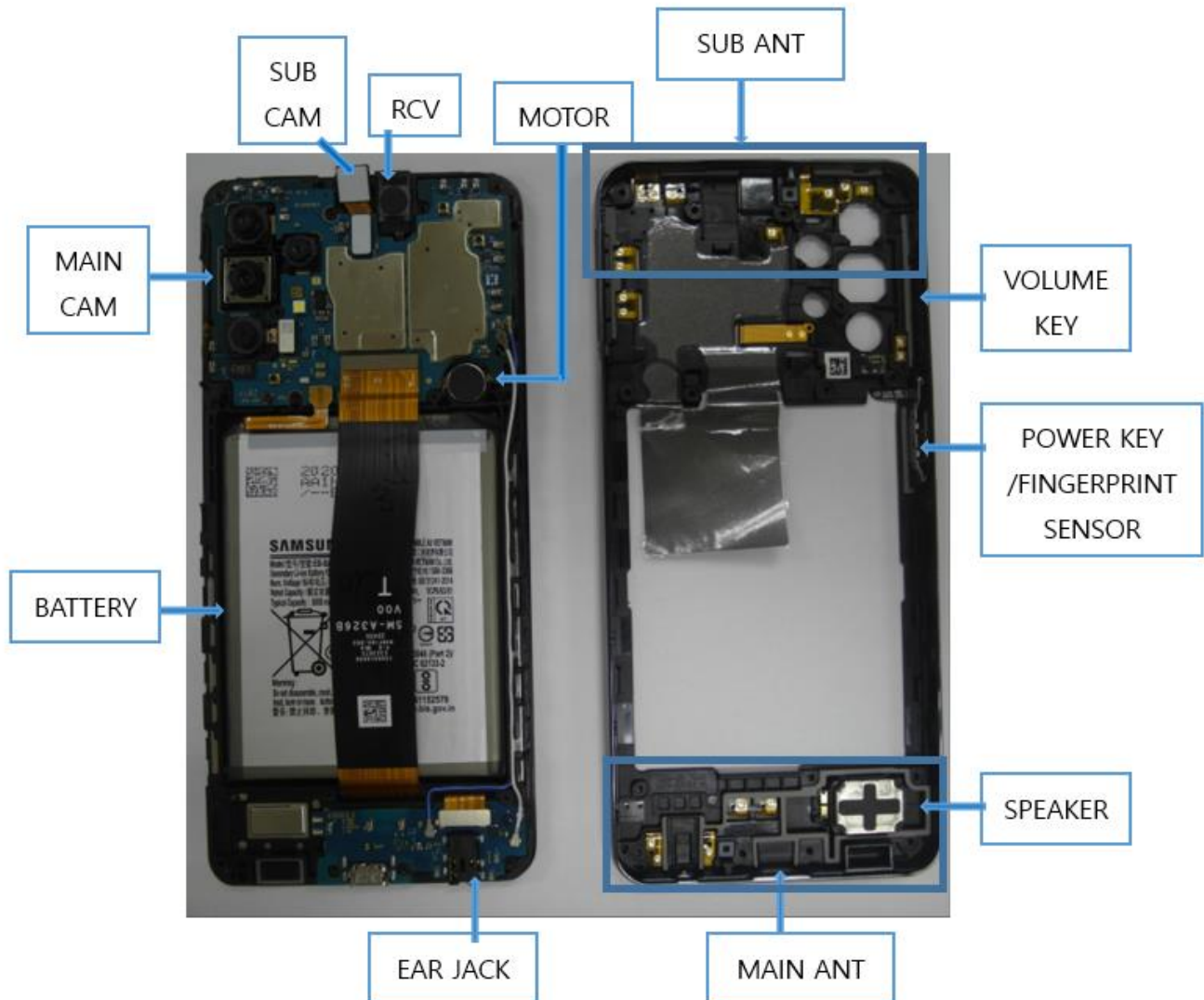


---

## 7. Level 2 Repair




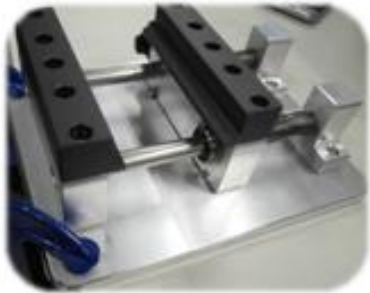


---

### 7-1. Components on the Rear Case



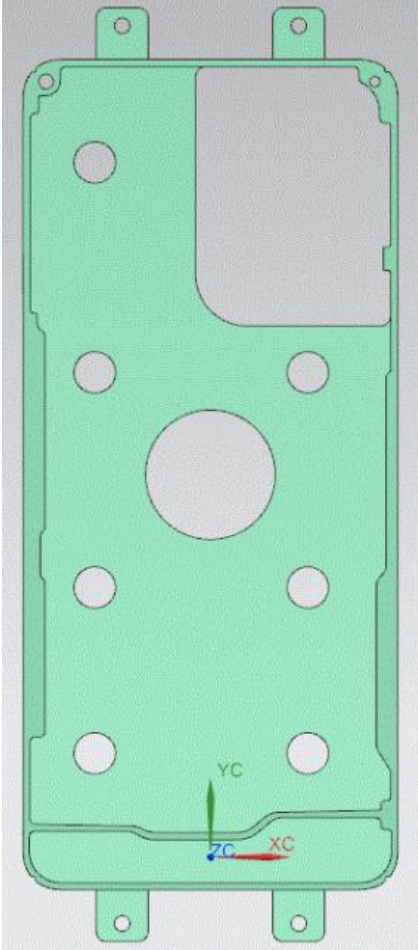
## 7. Level 2 Repair

### 7-2. Pre-requisite

	
<b>Tweezers / Disass'y Stick / Screw Driver</b>	<b>Anti-static Gloves</b>
	
<b>Anti-static Mat</b>	<b>Hot Plate</b>
	
<b>A OCTA Disassembly Holder</b>	<b>OCTA Disassembly Upper</b>
	
<b>Ethyl Alcohol</b>	<b>Cotton Swab</b>

## 7. Level 2 Repair

### 7-3. Parts which must be changed after repair

BOM Description & part code	Image	Remarks
<p>TAPE BACK COVER SVC</p> <p>[GH81-20172A]</p>		<p>Left items must be changed to the new one in case of disassembly.</p>

## 7. Level 2 Repair

### 7-4. Disassembly

1

Remove SIM/SD Tray



2

Put the device in the AOD/Heat-chamber as following below heating condition.

\*SOC 68% ↓ : 70°C/ 5~10 minute

\*SOC 68% ↑ : 60°C/ 5~10 minute



※ Caution

Be care of scratch

※ Caution

Please confirm the heating condition released lastly, and follow it.

3

Remove Finger print FPCB using tool



※ Caution

- 1) Be care of scratch
- 2) Be care of Rear and Finger print damage

4

Remove all 16 points of Rear Screws



※ Caution

Be care of Rear damage

## 7. Level 2 Repair

5

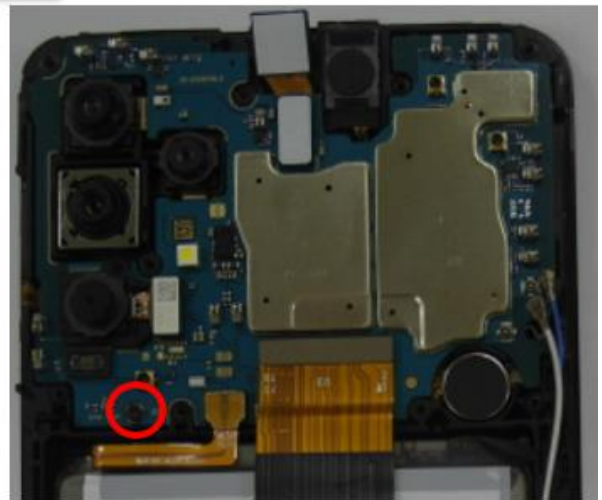
Open volume key side using disassembly tool.



※ **Caution**  
Be careful not to damage the PBA

6

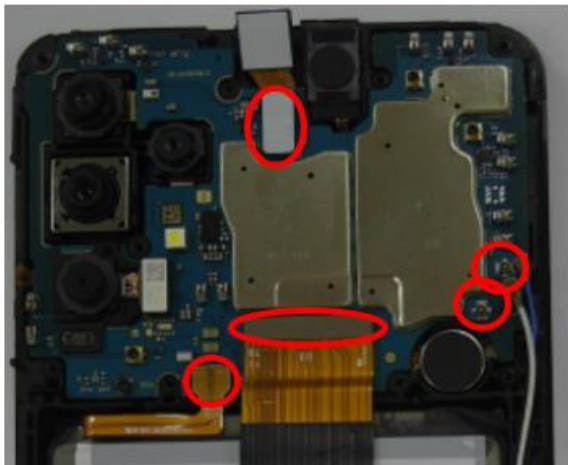
Remove 1 PBA screw



※ **Caution**  
Be careful not to damage the PBA

7

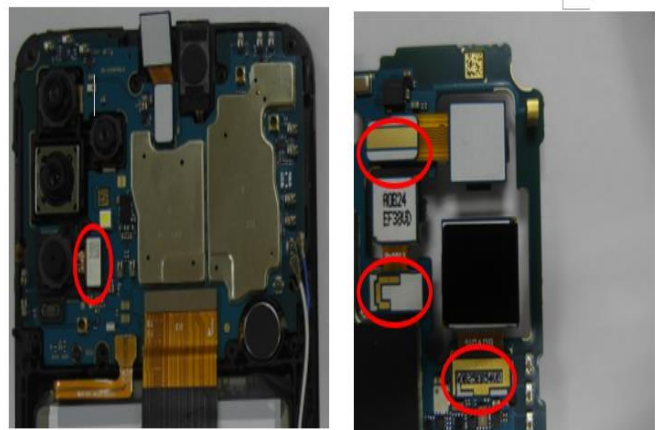
Remove the PBA and C to C FPCB and Batt Conn and White, Blue coaxial cable and VT Camera Conn.



※ **Caution**  
Be care of several kinds of damage at PBA and FPCB

8

Remove MAIN CAM connectors



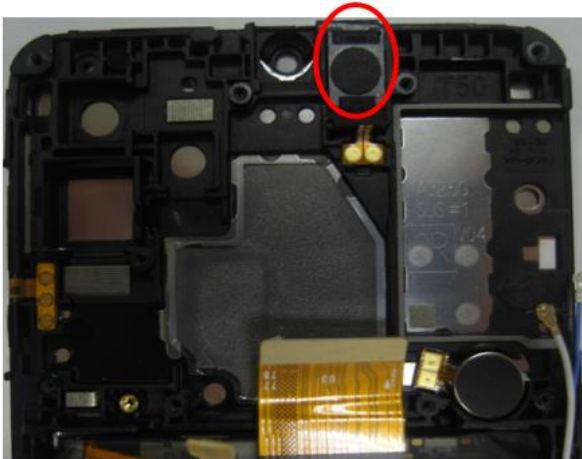
※ **Caution**  
Be careful not to damage the Camera Module



## 7. Level 2 Repair

9

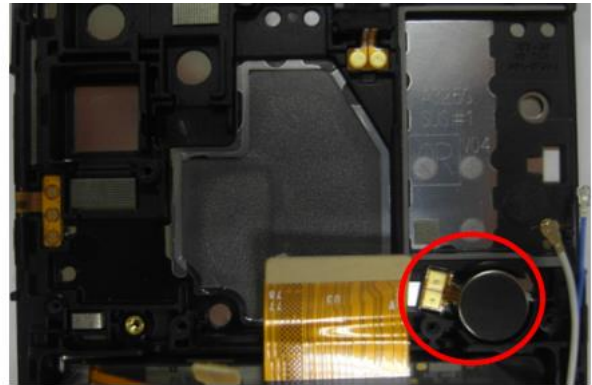
Detach RCV from Front Ass'y.



※ **Caution**  
Be careful not to damage the RCV.

10

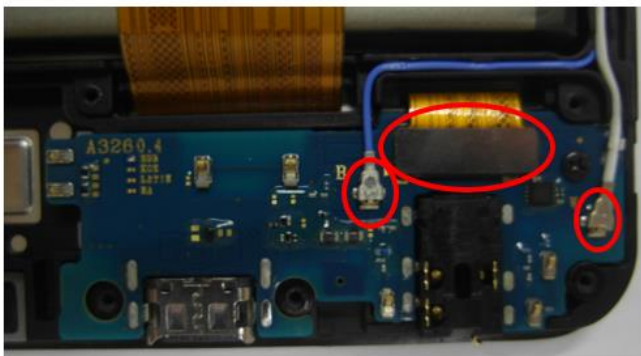
Detach Motor from Front Ass'y.



※ **Caution**  
Be careful not to damage the Motor.

11

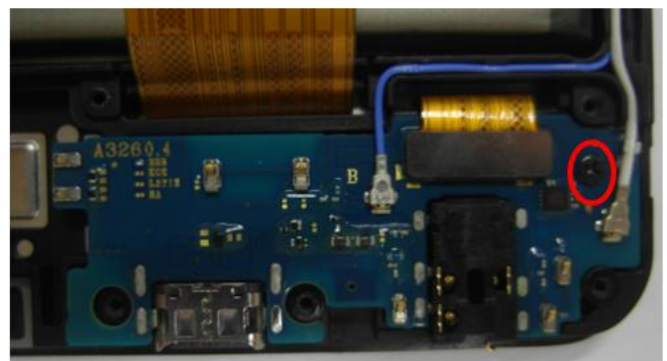
Remove C to C FPCB and BLUE,WHITE Coaxial cable.



※ **Caution**  
Be careful not to damage the C to C FPCB and BLUE, WHITE coaxial cable.

12

Detach serew and the Sub PBA.



※ **Caution**  
Be careful not to damage HB PBA and the Sub PBA.

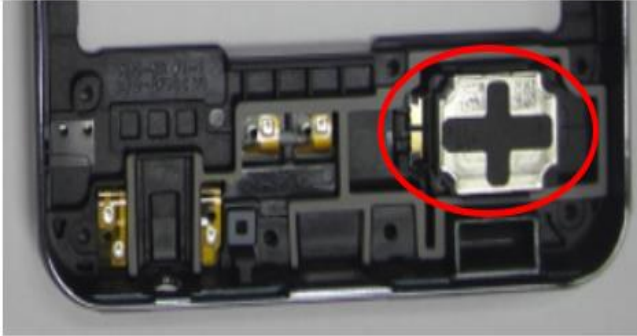
---

## 7. Level 2 Repair

---

**13**

Detach SPK from Rear Ass'y



※ **Caution**

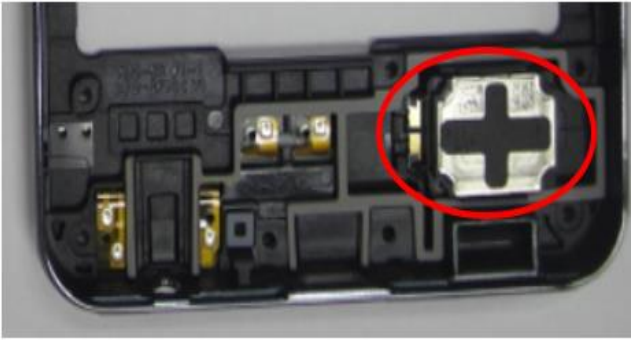
Be careful not to damage the SPK.

## 7. Level 2 Repair

### 7-5. Assembly

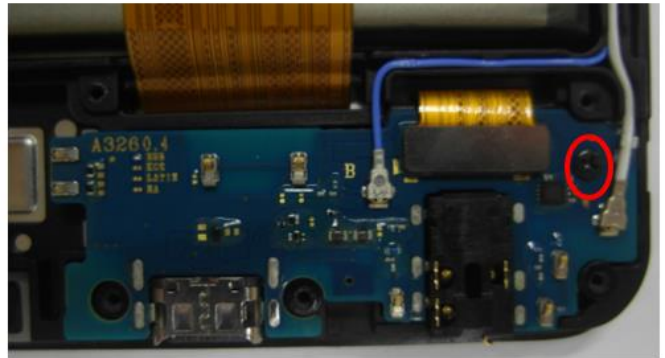
1

Attach SPK on Rear Ass'y.



2

Attach screw and Sub PBA on Front Ass'y.  
\* Torque Value :  $1.1 \pm 7\%$

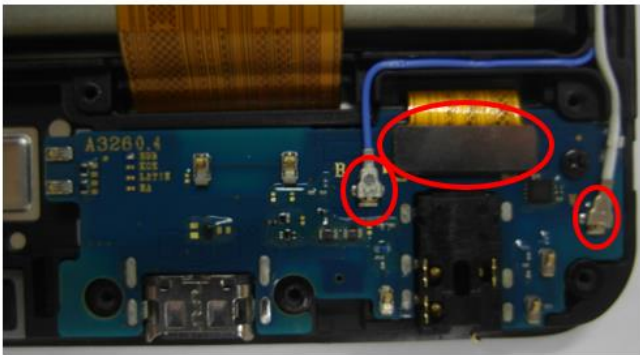


※ **Caution**  
Be care of SPK damage.

※ **Caution**  
Be care of Sub PBA damage.

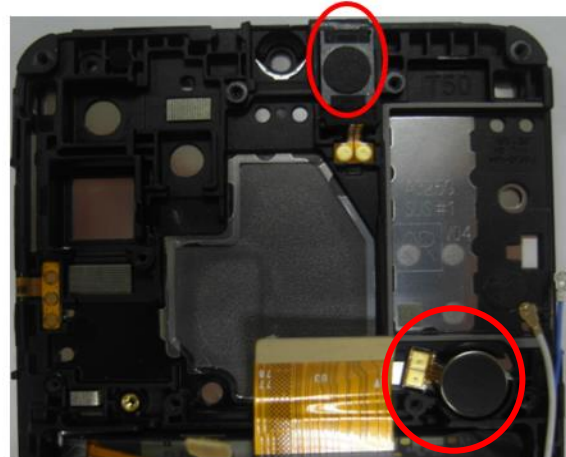
3

Attach C to C FPCB and Blue coaxial cable.



4

Attach Motor and Receiver in upper area



※ **Caution**  
Please keep the guide line for C to C FPCB  
and BLUE, WHITE coaxial Cable.

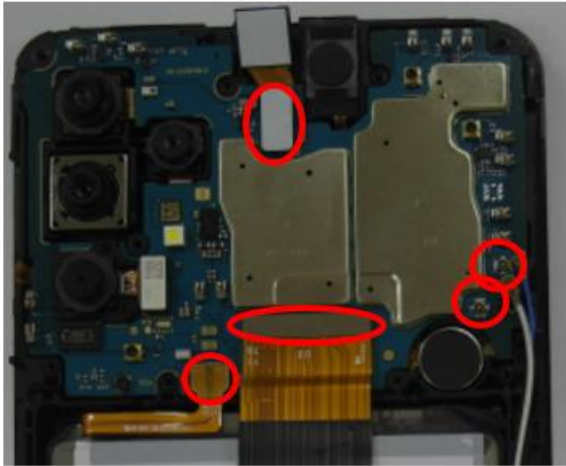
※ **Caution**  
1) Be care of scratch CAM lens  
2) Be care of damage each part.



## 7. Level 2 Repair

5

Assemble the PBA and C to C FPCB and Batt Conn and BLUE coaxial cable and VT Camera.



6

Screw insertion 1 Point.  
\* Torque Value :  $1.1 \pm 7\%$



※ Caution

Check for each connector connection

※ Caution

Be care of PBA damage.

7

Assemble Rear and screw insertion 16 point  
\* Torque Value :  $1.3 \pm 7\%$



※ Caution

Be care of PBA damage

8

Assemble Finger print connect FPCB



※ Caution

Be care of Finger Print FPCB damage.

## 7. Level 2 Repair

9

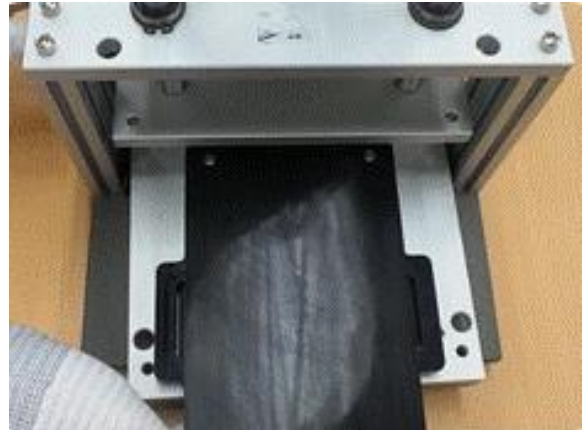
Attach back cover tape and assemble cover rear.



※ **Caution**  
Be care of scratch Rear cover

10

Press the back glass using pressing jig and pad.  
Insert SIM/SD Tray.  
SIM Tray must be separated before pressing the backglass or the LCD.



※ **Caution**  
- Pressing force : 1N  
- Pressing time : 1 minute